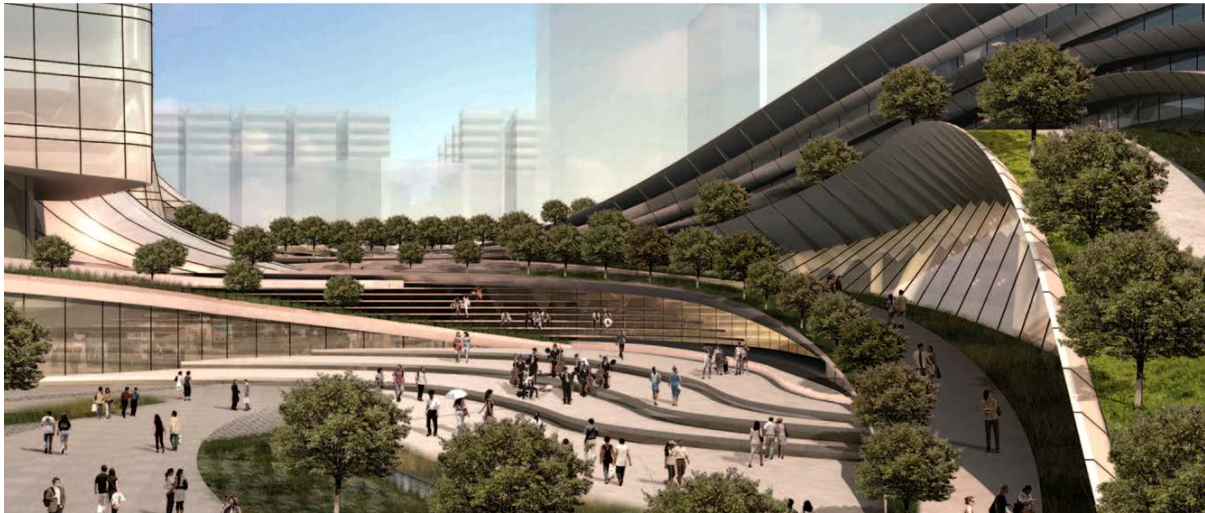




**Technical Visit to Hong Kong West Kowloon Station**  
**Friday, 21<sup>st</sup> December 2018**



Hong Kong West Kowloon is the terminus of the Hong Kong section of the Guangzhou – Shenzhen – Hong Kong Express Rail Link. It is the only station in the Hong Kong section and connects to the mainland China section through a dedicated tunnel. It was constructed by MTR Corporation.

The 11-hectare underground station is located in West Kowloon next to the West Kowloon Cultural District and connected to Kowloon Station and Austin Station. The Express Rail Link is expected to carry about 109,200 passengers daily for passenger service, similar to the current cross-boundary traffic at Hong Kong International Airport.

We will have opportunity of appreciation of this new focal point of the Kowloon skyline.

<b>Date and Duration:</b>	Friday, 21 <sup>st</sup> December 2018 (03:00 p.m. – 04:30 p.m.)
<b>Gathering Time and Place:</b>	<b>02:45 p.m.</b> at Customer Service Centre, West Kowloon Station
<b>Registration Fee:</b>	<b>Free of Charge</b>
<b>Number of Participants:</b>	Max. 20
<b>Deadline for Enrolment:</b>	17 <sup>th</sup> December 2018
<b>Who should Attend?</b>	Those interested in service quality

**For enrolment, please complete the registration in the following link**

<https://goo.gl/forms/HK4L5NkzPZqY2HTp1>

***Don't miss this opportunity. Number of participants is limited! ACT NOW!***



1. Places are limited and they will be filled on a first-come-first-served basis, with priority given to HKSQ / ASQ/ HKETA members.
2. HKSQ reserves the right to finalize the delegate list that will also be submitted to the host organization for concurrence, if required.
3. Successful applicants will be confirmed via e-mail by **19<sup>th</sup> December 2018**.
4. For enquiries, please contact Ms. Susanne Chang at 25693260 or via e-mail at [susannechang@tqm.com.hk](mailto:susannechang@tqm.com.hk).